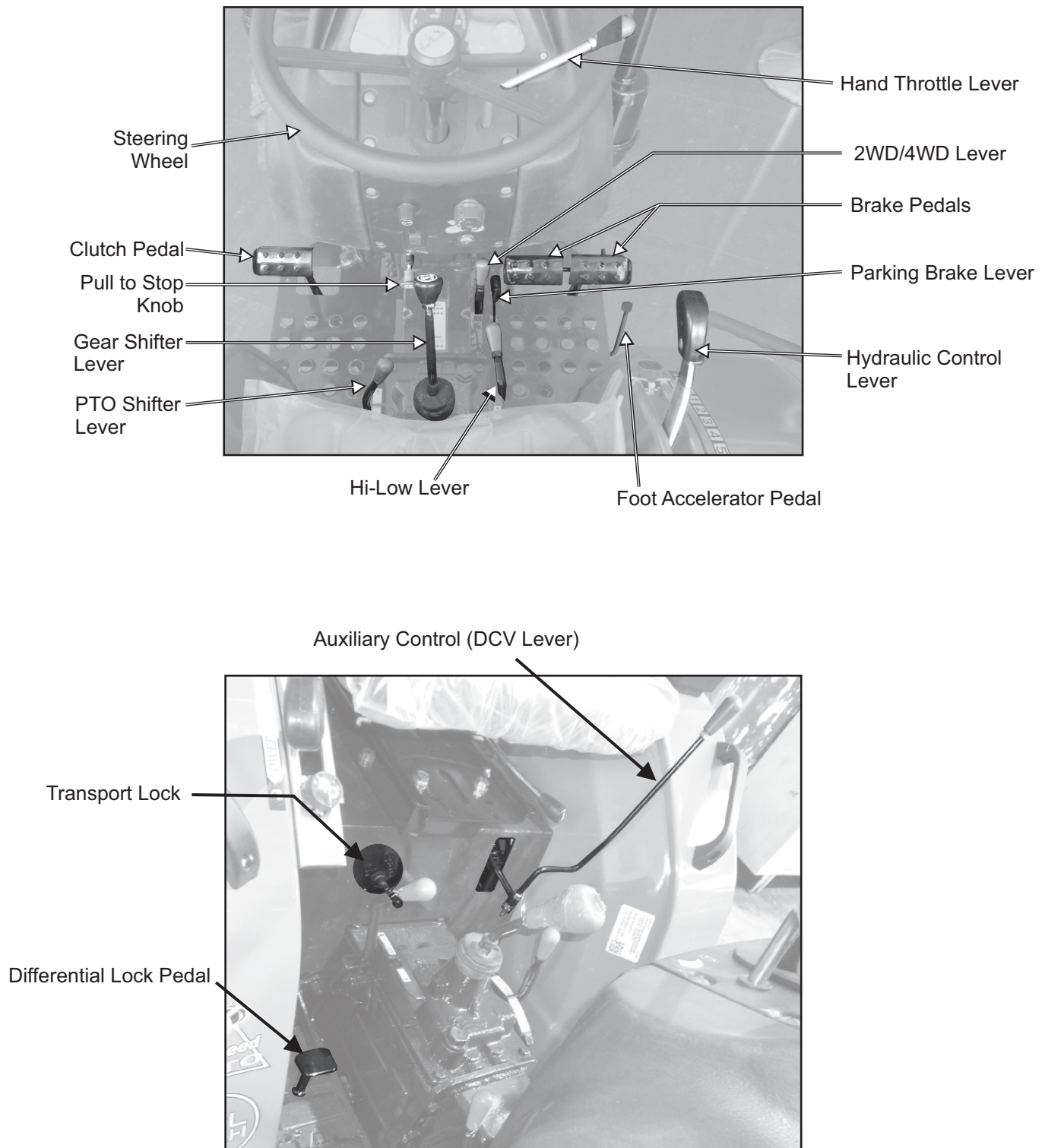


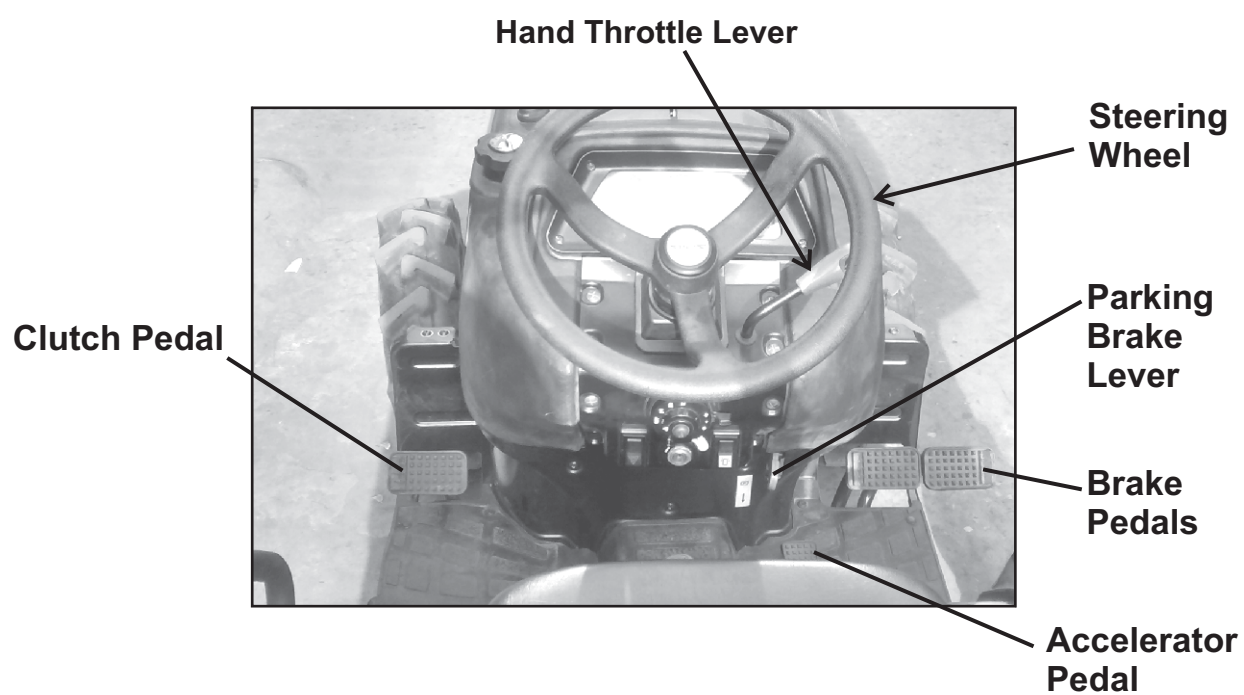
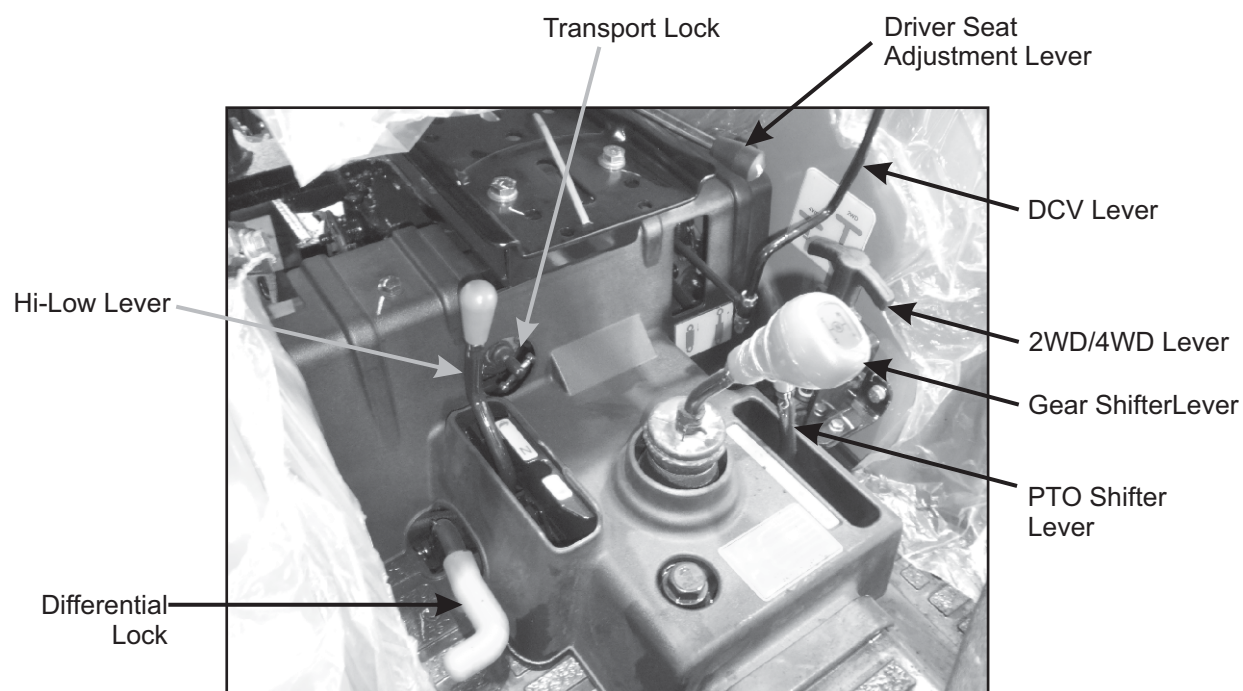
INSTRUMENTS & CONTROLS

3.1a Tractor Controls for 20 model



INSTRUMENTS & CONTROLS

3.1b Tractor Controls for 26 model (Fig. 3.1a & 3.1b)



INSTRUMENTS & CONTROLS

3.2a Instrument Panel (For 20 model) - Fig. 3.2a

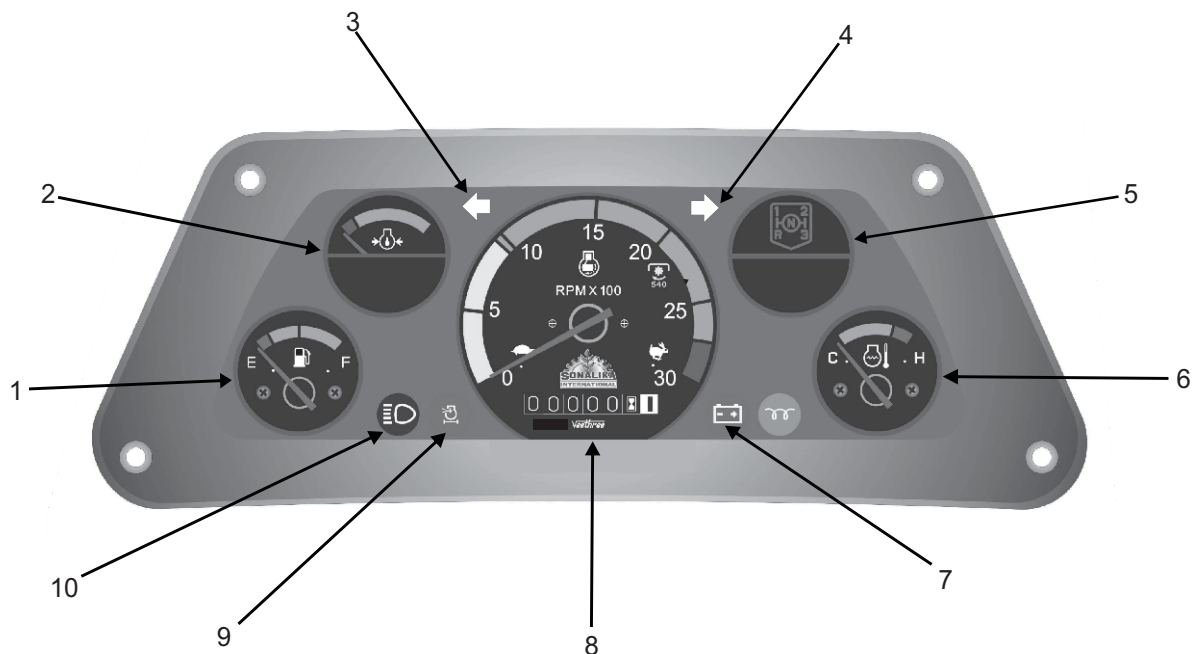


Fig. 3.2a

- 1 Fuel Gauge
- 2 Engine Oil Pressure Gauge
- 3 Left Turn Indicator
- 4 Right Turn Indicator
- 5 Gear Lever Position Indicator
- 6 Temperature Gauge
- 7 Battery Charging Indicator
- 8 Engine RPM cum Hour Meter
- 9 Air Cleaner Clogging Indicator (optional)
- 10 High/Low Beam Indicator

INSTRUMENTS & CONTROLS

3.2.b Instrument Panel (For 26 model) - Fig. 3.2b

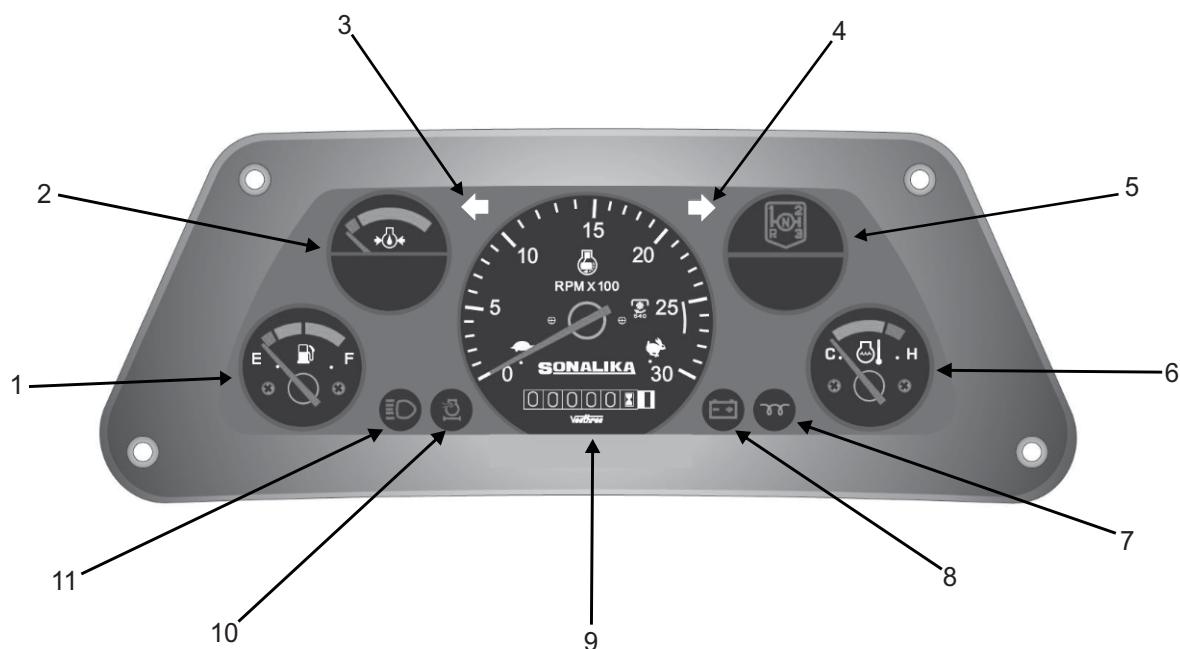


Fig. 3.2b

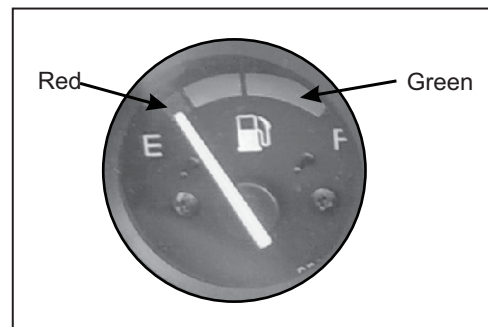
- 1 Fuel Gauge
- 2 Engine Oil Pressure Gauge
- 3 Left Turn Indicator
- 4 Right Turn Indicator
- 5 Gear Lever Position Indicator
- 6 Temperature Gauge
- 7 Cold Start Indicator
- 8 Battery Charging Indicator
- 9 Engine RPM cum Hour Meter
- 10 Air Cleaner Clogging Indicator
- 11 High/Low Beam Indicator

INSTRUMENTS & CONTROLS

3.2.1 Fuel Gauge

Fuel gauge gives an approximate indication of the quantity of fuel in fuel tank. If the needle enters in RED zone, refill the fuel tank.

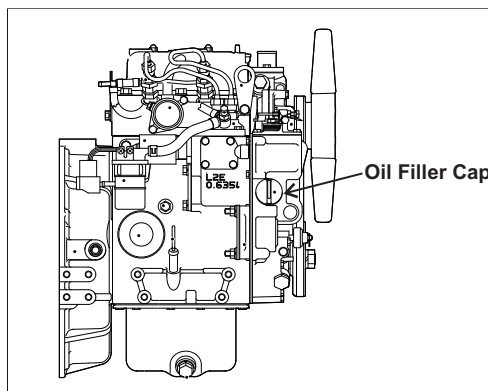
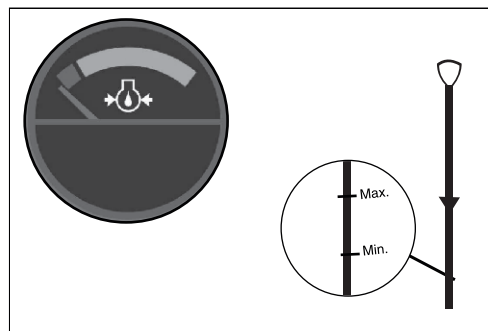
Ensure Min. 5 Litre [1.32 U.S. Gallon] of Fuel in Fuel Tank to avoid air locking.



3.2.2 Engine Oil Pressure Gauge

Oil Pressure Gauge indicates pressure of lubricating oil in the engine. If the needle goes in red zone, stop the engine and follow the procedure :

1. Stop your tractor to the side of road on leveled surface.
2. Wait for sufficient time after stopping the engine to get down the oil from gallery to oil sump.
3. Pull out the dipstick, wipe off oil with a clean cloth.
4. Insert the dipstick, fully into the oil level gauge guide, then pull out the gauge again. The correct oil level is between the Max. & Min. marks on the dipstick.
5. If the oil level is low, remove the oil filler cap and add recommended oil up to the Max. level.
6. Install the oil filler cap after top up.
7. Check the oil pan and other parts for oil leakage.
8. Start the engine, allow it to run idle and don't accelerate engine immediately if again, the needle goes into red zone, then contact your nearest dealer.

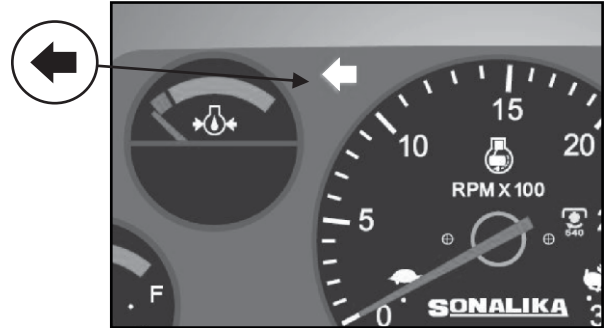


IMPORTANT: Do not operate the engine if there is no oil pressure indication. This may damage engine parts.

INSTRUMENTS & CONTROLS

3.2.3 Left Turn Indicator

It glows when the left side indicator is switched ON.



3.2.4 Right Turn Indicator

It glows when the right side indicator is switched ON.



3.2.5 Gear Lever Position Indicator

This is only for awareness about Positions of Gear Lever to select the desired gear.

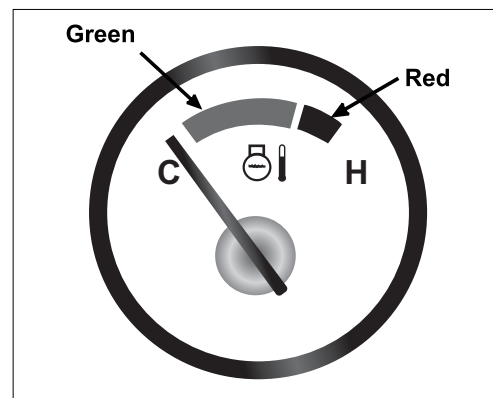


INSTRUMENTS & CONTROLS

3.2.6 Temperature Gauge:

This gauge indicates temperature of engine coolant, GREEN zone indicates normal temperature and RED zone indicates engine overheating. If the needle moves beyond normal range, towards RED zone, follow the procedure:

1. Drive safely to the side of road and stop your tractor.
2. Allow the engine to run idle.
3. If the temperature does not go down, shut it off and allow sufficient time for it to cool.
4. Visually inspect the fan belt for looseness, breakage and all water hose connections for leak.
5. If the fan belt is OK and no coolant leak is noticed check the coolant level.
6. Add coolant if required otherwise contact your nearest dealer.



WARNING

Do not remove the radiator cap when the engine and radiator are hot. Hot coolant and steam may blow out under pressure, which could cause serious injury. The cap should only be taken off when the coolant temperature has lowered.

Necessary precaution to be taken while opening the radiator cap.

3.2.7 Cold Start Indication (Provided in 26 model)

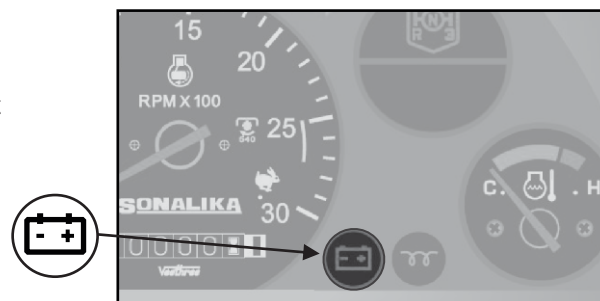
It glows when ignition heater is ON at second position of the starting key.



3.2.8 Battery Charge Indicator

This indicator indicates that either battery is being charged or not. Refer the below given observations with respect to different

CONDITIONS			Battery Charging System Functioning
IGNITION SWITCH	ENGINE	INDICATOR	
ON	OFF	GLOW	OK
ON	OFF	OFF	Charging System/Battery is defective, Get both thing checked from electrician
ON	Start/Running	OFF	Battery being Charged
ON	Start/Running	GLOW	Charging System is defective/Battery is draining out, get the charging system checked from electrician.



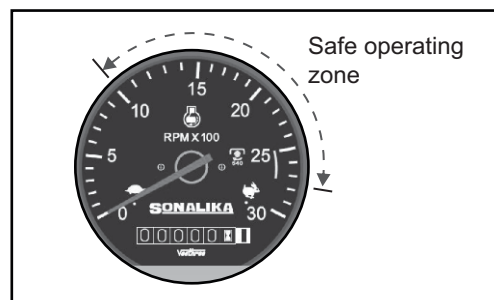
INSTRUMENTS & CONTROLS

3.2.9 Engine RPM cum Hour Meter

Needle of this meter indicates speed of engine in revolution per minute and the hour meter indicates the number of hours worked by the engine.

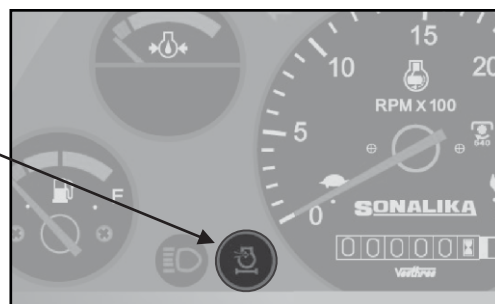
Green Zones is safe for operation.

NOTE: Hour meter may be defer from actual hour (As per Clock) this is purely depend on Engine RPM.



3.2.10 Air Cleaner Clogging Indicator

This light will glow when the air filter get choked. Clean the air cleaner element immediately with air pressure if this light is glowing.



3.2.11 High Beam Indicator

This light glows when Head Lights are in high beam mode.



INSTRUMENTS & CONTROLS

3.3.a Dashboard Controls for 20 model (Fig. 3.3a):

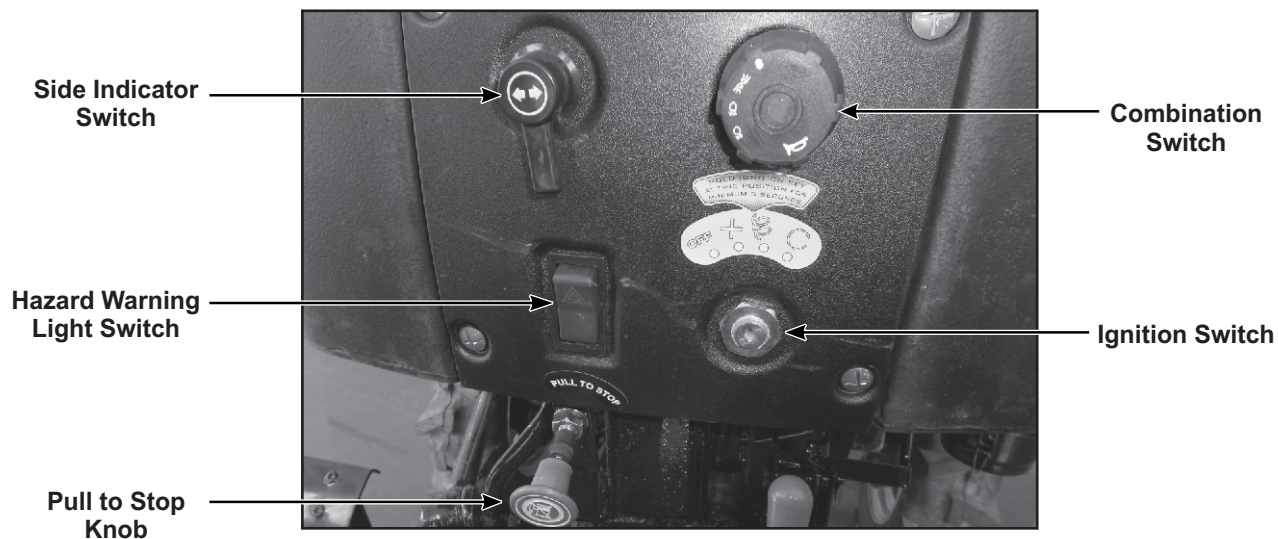


Fig. 3.3a

3.3.1a Hazard Warning Light Switch (Fig. 3.3.1a):

Purpose of the hazard switch is as follows.

1. All the four lights blinking, indicates that driver has no control on tractor.
 2. Mechanical defects in the tractor.
- Push this switch to blink all indicators in HAZARD situation to alert others.

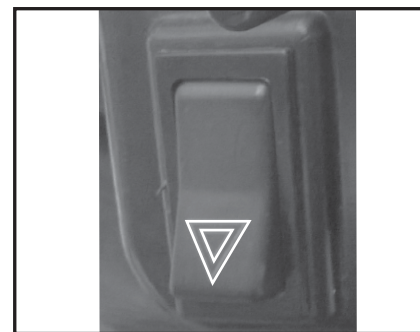


Fig. 3.3.1a

3.3.2a Combination Switch (Fig. 3.3.2a):

This Switch illuminates all lights (Parking Light, Head Light, High Beam & Low beam) with clockwise rotation as well as Horn Switch.

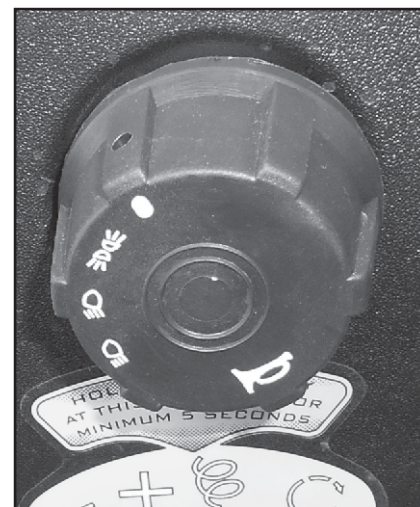
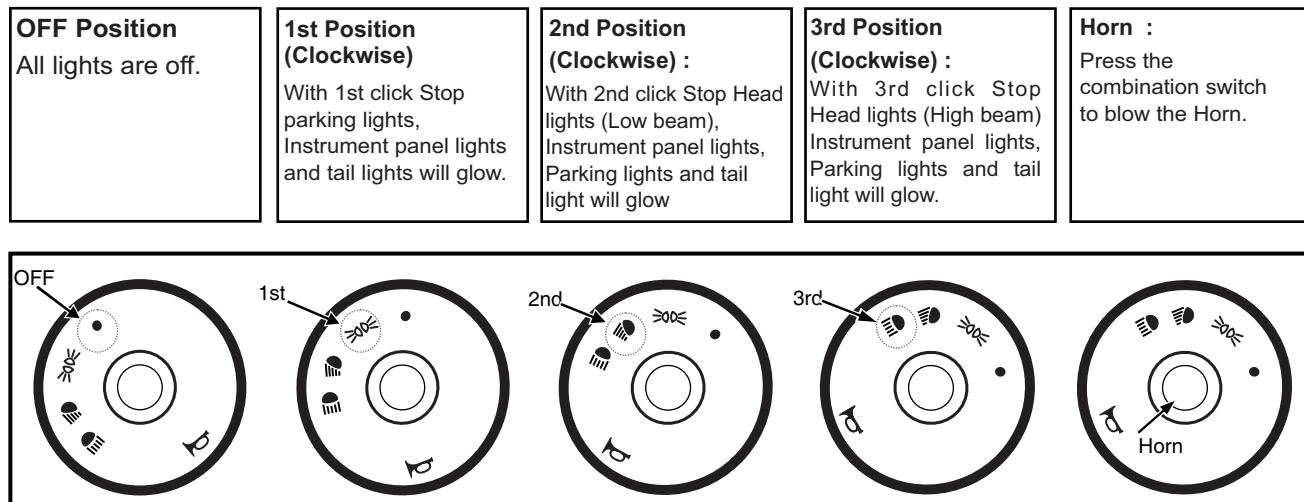


Fig. 3.3.2a

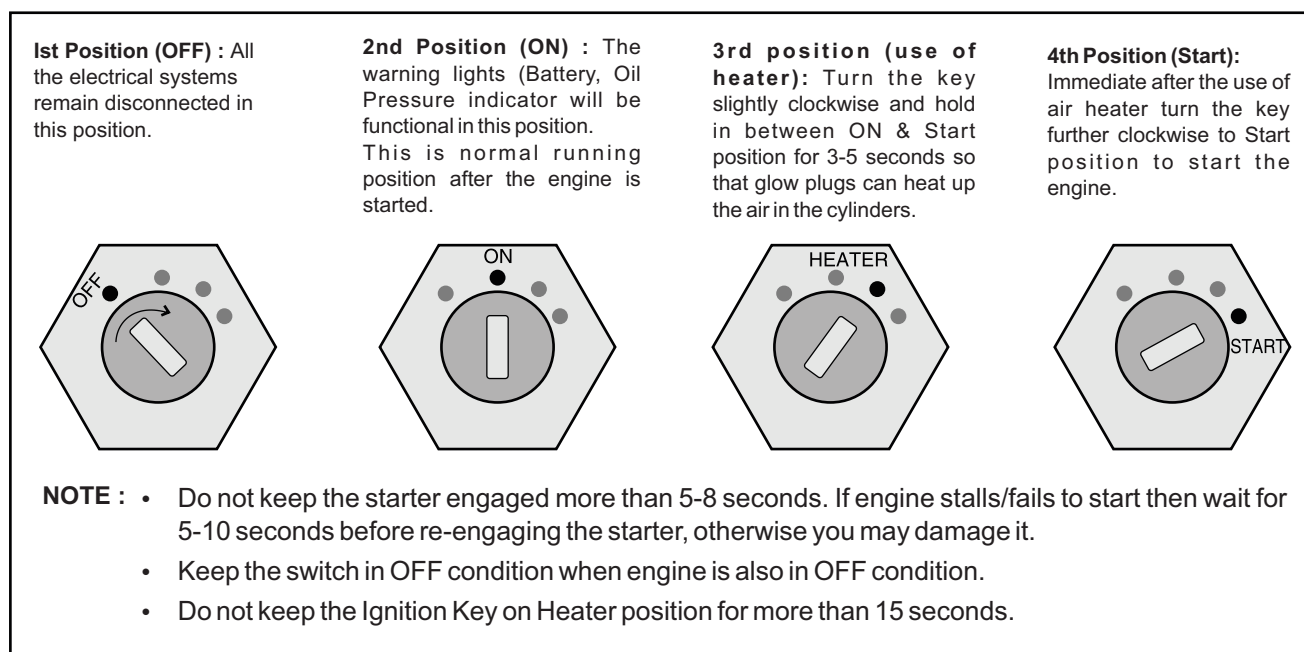
INSTRUMENTS & CONTROLS

Functioning of Combination switch is as below:



3.3.3a Starting Key (Ignition) Switch:

Functioning of starting key switch is as below:



INSTRUMENTS & CONTROLS

3.3.4 Beacon Light Switch (Optional Feature)

This switch is used to ON/OFF the Beacon Light (Revolving Light) mounted on ROPS (See fig. 3.3.4).

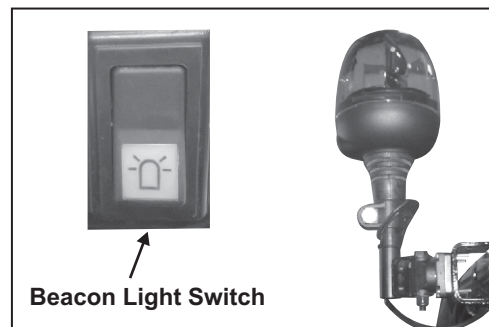


Fig. 3.3.4

3.3.5 'Pull to Stop' Knob (Option in 20 model)

To stop the engine release the accelerator lever and pull the stopping knob which is located beneath dashboard as shown in figure 3.3.5.

IMPORTANT: After stopping the engine, push it back to its original position.

In 26 model, engine is shut off directly by turning the ignition key to 'OFF' position.

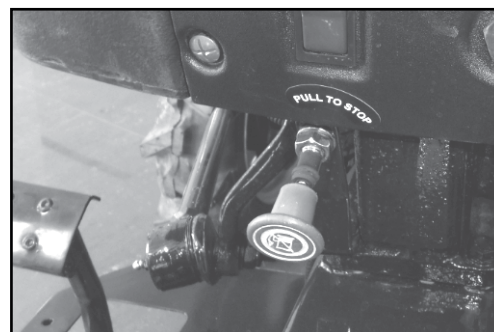


Fig. 3.3.5

3.3.6 Side Indicator Switch (Option in 20 model)

This switch is used for indicating the vehicle turn. Move turn signal lever left to indicate left hand turn or right for right hand turn. Indicator lights in cluster will flash accordingly. See figure 3.3.6.



Fig. 3.3.6

INSTRUMENTS & CONTROLS

3.3b Dashboard Controls for 26 model (Fig. 3.3b):

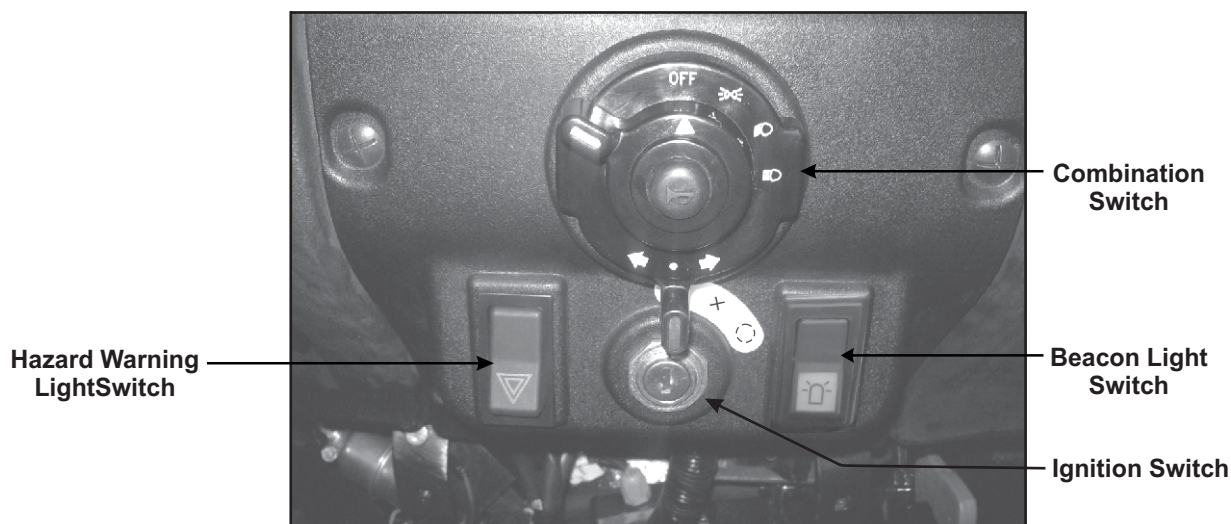


Fig. 3.3b

3.3.1b Hazard Warning Light Switch (Fig. 3.3.1b):

Purpose of the hazard switch is as follows.

1. All the four lights blinking, indicates that driver has no control on tractor.
 2. Mechanical defects in the tractor.
- Push this switch to blink all indicators in HAZARD situation to alert others.



Fig. 3.3.1b

3.3.2b Combination Switch (Fig. 3.3.2b):

Side Indicator Switch (A):

This switch is used for indicating the vehicle turn. Move turn signal lever left to indicate left (L) hand turn or right (R) for right hand turn. Indicator lights will flash according.

Horn Switch (B):

Press this switch to blow the Horn.

Head Light and Parking Light Switch (C):

This switch illuminates all lights (Parking Light, Head Light, High Beam, Low Beam) with the clockwise rotation.

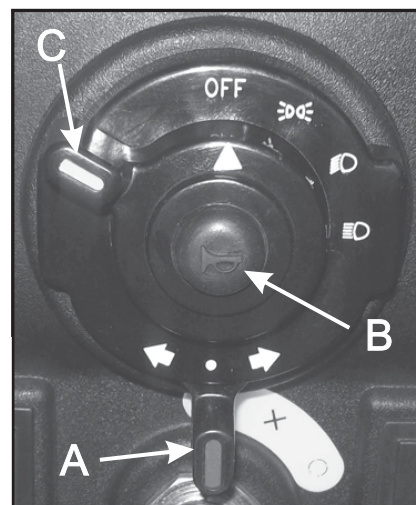
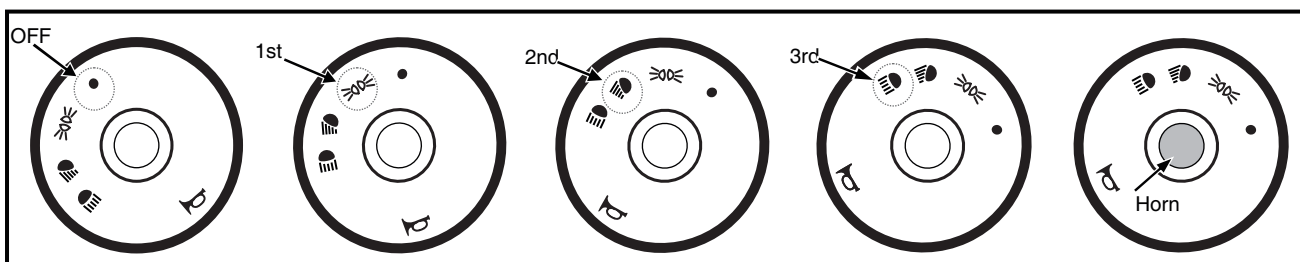


Fig. 3.3.2b

INSTRUMENTS & CONTROLS

OFF Position All lights are off.	1st Position (Clockwise) With 1 st click Stop parking lights, Instrument panel lights and tail lights will glow.	2nd Position (Clockwise) : With 2 nd click Stop Head lights (Low beam), Instrument panel lights, Parking lights and tail light will glow	3rd Position (Clockwise) : With 3 rd click Stop Head lights (High beam) Instrument panel lights, Parking lights and tail light will glow.	Horn : Press the combination switch to blow the Horn.
--	--	--	---	---



3.3.3b Starting Key (Ignition) Switch:

Functioning of starting key switch is as below:

1st Position (OFF) : All the electrical systems remain disconnected in this position.	2nd Position (ON & HEATER) : The warning lights (Battery, Oil Pressure indicator) will be functional in this position. This is normal running position after the engine is started. Glow plug indication in instrument cluster will glow at this position.	3rd Position (START): Immediate after the use of air heater turn the key further clockwise to Start position to start the engine.

NOTE :

- Do not keep the starter engaged more than 5-8 seconds. If engine stalls/fails to start then wait for 5-10 seconds before re-engaging the starter, otherwise you may damage it.
- Keep the switch in OFF condition when engine is also in OFF condition.

3.4 Fuse Box:

Fuse box is mounted near Fuel Tank (see figure 3.4). If an electrical failure occurs, check and rectify the problem and then replace the blown up fuse with genuine fuse of specified rating.

CAUTION

Never install a wire instead for proper fuse.

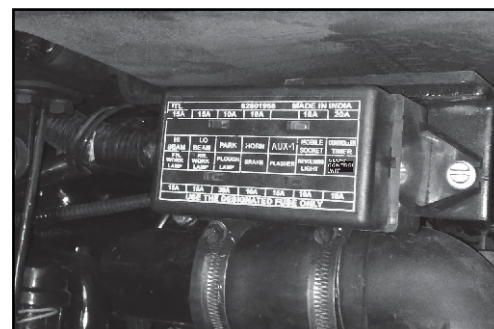


Fig. 3.4

INSTRUMENTS & CONTROLS

3.5 Tractor Lights

a. **Headlights:** Headlights of the tractor are shown in figure 3.5a.

b. **Tail Lights:** Tail lights are shown in figure 3.5b.

Tail Lights are having various indications i.e. light indication for brakes, side indicators and hazard warning light.

c. **Plough Lamp:** Adjustable plough lamp is provided at rear side as shown in figure 3.5c.

d. **Beacon Light** (optional): To be used according to your country's regulation. This light is detachable type and can be removed based on requirements (fig. 3.5d).

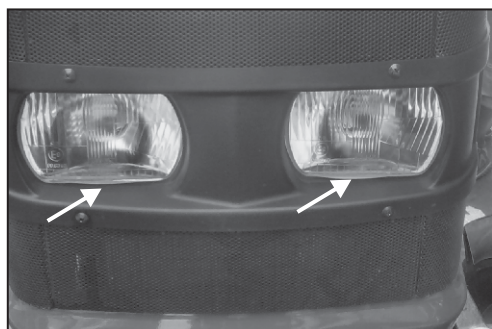


Fig. 3.5a

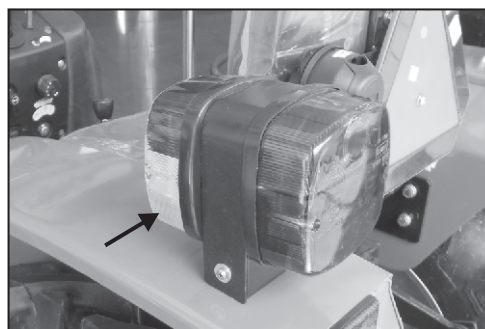


Fig. 3.5b

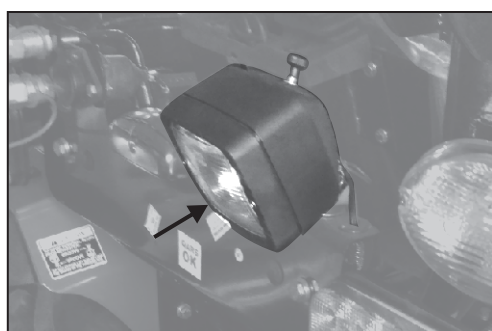


Fig. 3.5c

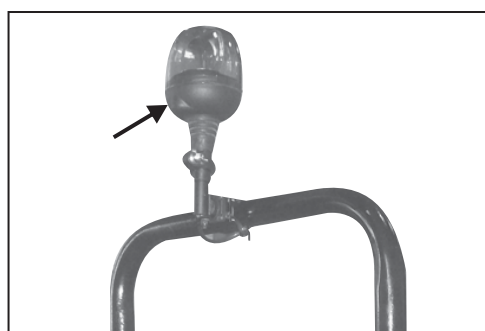


Fig. 3.5d

INSTRUMENTS & CONTROLS

3.6 Driver's Seat

While seating, adjust the wt of operator with wt adjustment knob provided at back side of seat so as to be comfortable driving & to minimise vibrations.

With the fore & aft adjusting knob, slide the seat so as to have a comfortable approach towards all levers. The range of effort that can be adjusted while sitting on seat is 50-140 kgf [110.2 - 308.6 lbf]

Horizontal Adjustment (optional feature)

- Lift the lever (1) to move the seat forward and backward.

Vertical Adjustment

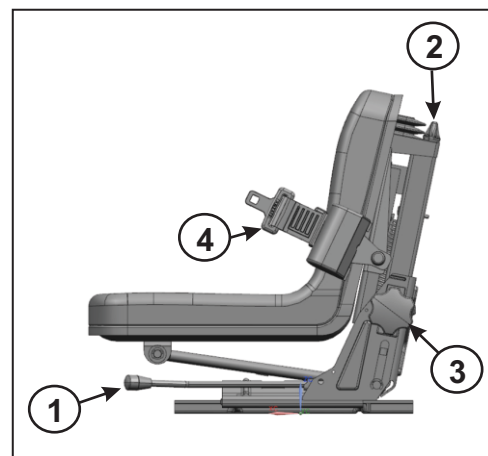
- Use knob (2) to adjust the suspension.
- Use knob (3) to adjust the height of the seat vertically.
- Seat belt (4) for safety.



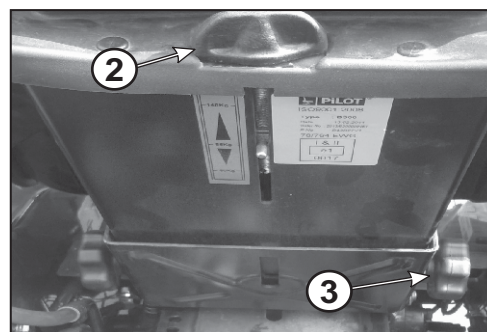
CAUTION

To avoid personal injury

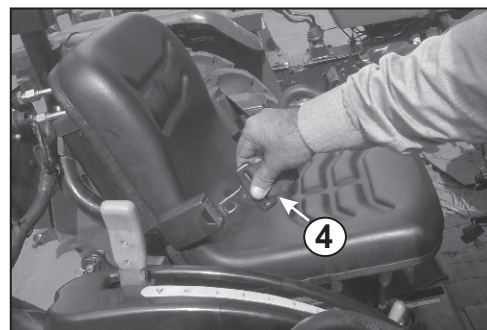
- Make adjustments to the seat only while the tractor is stopped.
- Make sure that the seat is completely secured after each adjustment.
- Do not allow any person other than the operator to ride on the tractor.
- Always use the seat belt when the ROPS is installed.
- Do not use the seat belt if the tractor is not equipped with ROPS.



3.6a



3.6b



3.6c

3.7 Tool Box

Tool box (A) is mounted on left side fender (fig. 3.7).

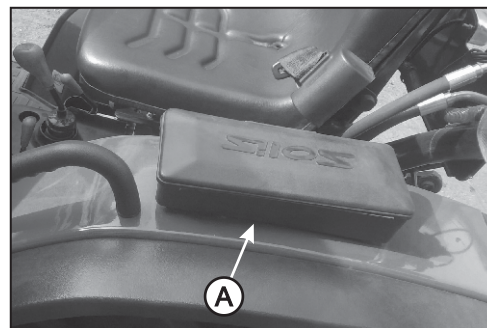


Fig. 3.7

INSTRUMENTS & CONTROLS

3.8 Registration Plate

A vehicle registration plate (A1) or number plate in 26 model is mounted at rear end of the tractor as shown in figure 3.8a.

Vehicle registration plate (A2) for 20 model is mounted at rear end of the tractor on left side fender, as shown in figure 3.8b.

The same is to be used as per country's rule.

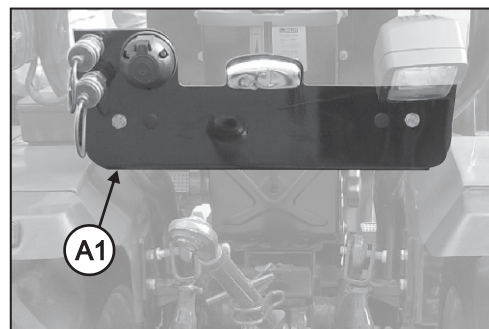


Fig. 3.8a

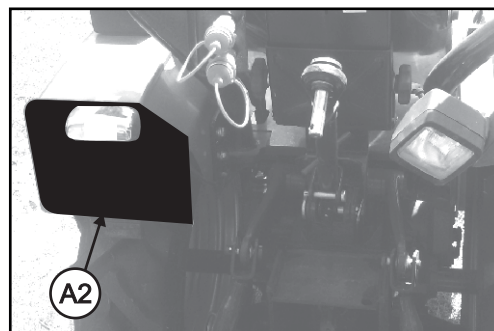


Fig. 3.8b

3.9 Seven Pin Socket:

7 Pin socket (B1) for 20 model is mounted at rear side as shown in fig. 3.9a.

7 Pin socket (B2) for 26 model is mounted on licence plate to attach the trailer connections (see fig. 3.9b).

Details of connectors (in B1 & B2) is given under:

PIN No	Used for	Wire Colour Code
PIN1	Left Turn Signal	Green/Blue (G/L)
PIN2	Not in Use	–
PIN3	Earth	Black (B) or White (W)
PIN4	Right Turn Signal	Green/Red (G/R)
PIN5	Right Parking Light	Red (R)
PIN6	Brake Light	Green/Black (G/B)
PIN7	Left Parking Light	Red/Green (R/G)

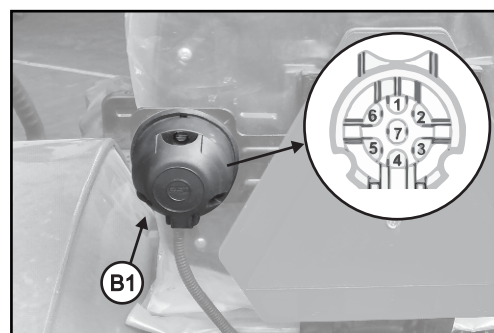


Fig. 3.9a

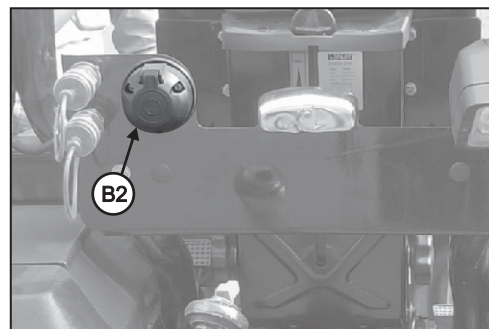


Fig. 3.9b